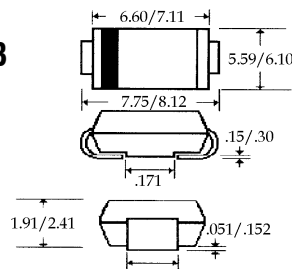


Description



Mechanical Dimensions

DO-214AB
(SMC)



(Dimensions in mm)

Features

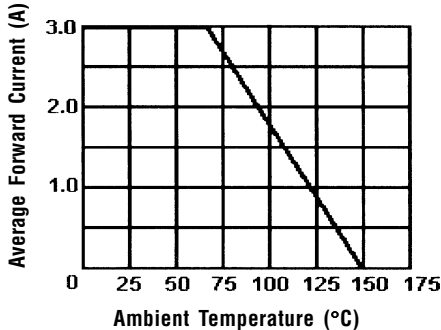
- **LOW COST**
- **LOW LEAKAGE**
- **HIGH SURGE CAPABILITY**
- **MEETS UL SPECIFICATION 94V-0**

UFS30 . . . 36 Series						Units
Maximum Ratings	UFS30	UFS31	UFS32	UFS34	UFS36	
Peak Repetitive Reverse Voltage... V_{RRM}	50	100	200	400	600	Volts
RMS Reverse Voltage... $V_{R(rms)}$	35	70	140	280	420	Volts
DC Blocking Voltage... V_{DC}	50	100	200	400	600	Volts
Average Forward Rectified Current... $I_{F(av)}$ $T_A = 55^{\circ}C$	3.0					Amps
Non-Repetitive Peak Forward Surge Current... I_{FSM} @ Rated Current & Temp	75					Amps
Operating & Storage Temperature Range... T_J, T_{STRG}	-65 to 150					$^{\circ}C$
Electrical Characteristics						
Maximum Forward Voltage @ 3.0A... V_F	< 0.95 >		1.3	1.5		Volts
Maximum DC Reverse Current... I_R @ Rated DC Blocking Voltage	5.0					μ Amps
Typical Junction Capacitance... C_J (Note 1)	100					pF
Maximum Reverse Recovery Time... t_{RR} (Note 2)	< 35 >		< 50 >			ns

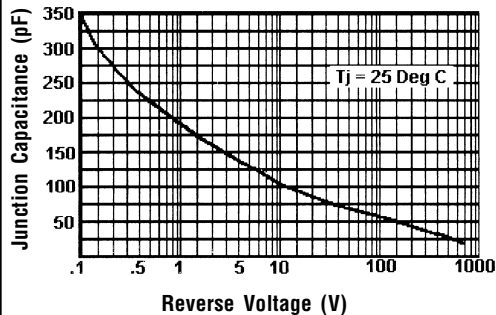
3.0 Amp SMD SUPER FAST PLASTIC RECTIFIERS

UFS30...36 Series

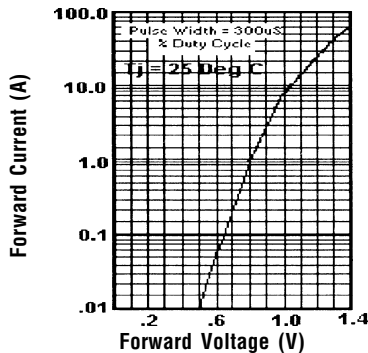
Forward Current Derating Curve



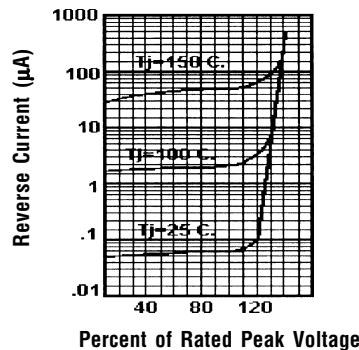
Typical Junction Capacitance



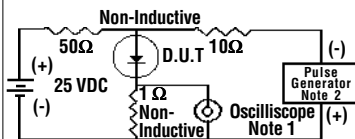
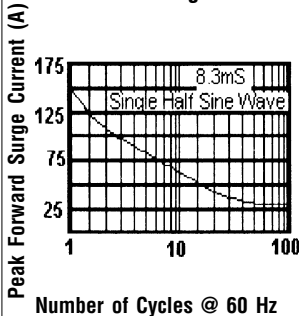
Typical Instantaneous Forward Characteristics



Typical Reverse Characteristics



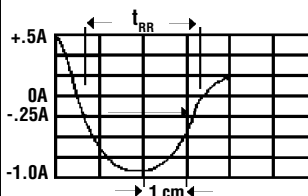
Non-Repetitive Peak Forward Surge Current



Notes:

1. Rise Time = 7 ns Max. Impedance = 1 megohm, 22 pF
2. Rise Time = 10 ns Max. Source Impedance = 50 Ohms

Reverse Recovery Characteristics



Ratings at 25 Deg. C ambient temperature unless otherwise specified.

Single Phase Half Wave, 60 Hz Resistive or Inductive Load.

For Capacitive Load, Derate Current by 20%.

NOTES: 1. Measured @ 1 MHz and applied reverse voltage of 4.0V.
2. $I_F = 0.5A$, $I_R = 1.0A$, $I_{rr} = 0.25A$